

## Application

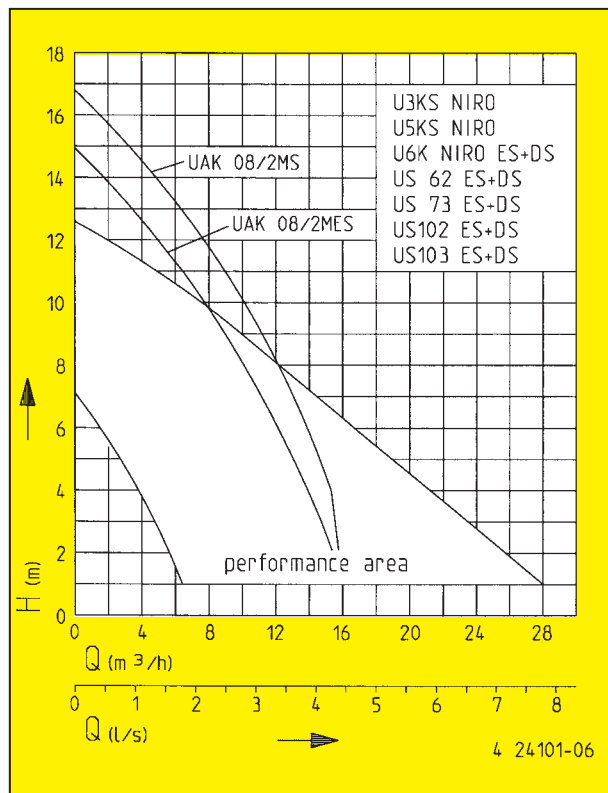
The Drainfix floor-mounted sump forms, together with one of the provided pumps, a complete drainage system designed for fairly high effluent volumes and high storage capacity. This unit discharges waste water and domestic sewage from houses, laundries, storage rooms, or cellars.

The effluent pumps U 3 K NIRO, U5K NIRO, U 6 K NIRO, US 62-103 and submersible sewage pumps UAK 08/2 (with flanged outlet bend) must be connected to the pressure pipe in the sump. The incoming waste/sewage water will be automatically transported to the nearest disposal pipe work or gravity man hole. The PE tank (220 ltr) has two feed branches 1xDN 100 and 1xDN 100/150, which are laterally offset by 90°, one pressure outlet in PVC and one 70 mm dia. venting branch.

The scope of supply comprises the plastic Drainfix tank with fixable cover and sump pressure pipework in 1½" (pre-assembled), one end plug, one round-cord seal, and fittings.



We reserve the right to change specifications without notice.  
Pump performance is subject to ISO 2548 tolerances.



- ▶ Fixable cover
- ▶ Various feed options
- ▶ Flexible selection of pumps
  
- ▶ PE tank
- ▶ Pre-assembled sump pressure piping
- ▶ Pressure pipe with quick coupling

## Abovefloor sump Drainfix

Type	max. h x w x l	weight	Code No.
Drainfix tank, with cover, without pump	770 x 760 x 740 mm	16,5 kg	09961

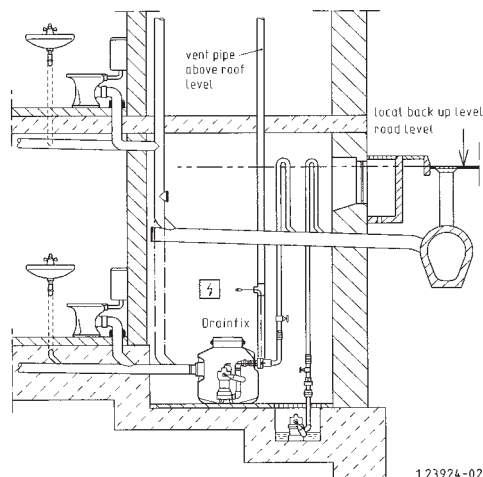
## Performance

Types	Delivery head H [m]	1	2	3	4	5	6	7	8	9	10	11	12	13	14	15
U3KS NIRO	Flow rate Q [m <sup>3</sup> /h]	6,5	5,5	5	4	2,5	1,5									
U5K NIRO ES		11	10,5	9	7,5	6,5	4,5	2,5								
U6K NIRO ES		15	14,5	13	11	9,5	7	4,5	2							
U6K NIRO DS		17	16	15	13,5	11,5	10	7,5	4	0,5						
US62 ES		19	17	15	12	10	8	6	4	2						
US62 DS		22	20	17	15	12	10	8	6	4						
US73 ES		19	17	15	12	10	8	6	4	2						
US73 DS		22	20	17	15	12	10	8	6	4						
US102 ES/DS		28	26	23	21	19	17	15	12	10	8	5	2			
US103 ES/DS		28	26	23	21	19	17	15	12	10	8	5	2			
UAK08/2MS		16	16	15,5	15	14,5	14	13	12	11	10	9	8	6,5	5	3,5
UAK08/2MES		16	15,5	14,5	14	13	12	11	10	9	7,5	6,5	5	3,5		

## Electrical data

Type	Type of current	Voltage Volt	Motor rating kW		RPM min <sup>-1</sup>	F.L.C. Amp.	Motor-protection	Plug
			P <sub>1</sub>	P <sub>2</sub>				
U3KS NIRO	1-phase	1/N/PE~230	0,32	0,20	2720	1,4	in motor	safety-
U5K NIRO	1-phase	1/N/PE~230	0,52	0,38	2716	2,3	in motor	safety-
U6K NIRO ES	1-phase	1/N/PE~230	0,70	0,45	2600	3,4	in motor	safety-
U6K NIRO DS	3-phase	3/PE~400	0,75	0,60	2800	1,3	in motor	CEE-
US62 ES	1-phase	1/N/PE~230	0,83	0,50	2510	3,9	in motor	safety-
US62 DS	3-phase	3/PE~400	0,85	0,60	2800	1,4	in motor	CEE-
US73 ES	1-phase	1/N/PE~230	0,83	0,50	2510	3,9	in motor	safety-
US73 DS	3-phase	3/PE~400	0,85	0,60	2800	1,4	in motor	CEE-
US102 ES	1-phase	1/N/PE~230	1,37	0,98	2700	6,0	in motor	safety-
US102 DS	3-phase	3/PE~400	1,36	1,06	2740	2,4	in motor	CEE-
US103 ES	1-phase	1/N/PE~230	1,37	0,98	2700	6,0	in motor	safety-
US103 DS	3-phase	3/PE~400	1,36	1,06	2740	2,4	in motor	CEE-
UAK 08/2 MS	3-phase	3/PE~400	1,65	1,24	2674	2,8	in motor	CEE-
UAK 08/2 MES	1-phase	1/N/PE~230	1,37	0,98	2705	6,0	in motor	safety-

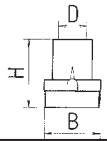
## Mounting arrangement Drainfix



123924-02

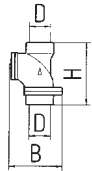
**Accessories**

Code No.



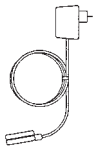
**Swing-type check valve 2" (DN 50), PN 4,**  $\frac{H}{150}$   $\frac{B}{120}$   $\frac{D}{2''}$   
EN 12050-4

**00326**



**Ball check valve 2" (DN 50), PN 6**  $\frac{H}{185}$   $\frac{B}{150}$   $\frac{D}{2''}$   
EN 12050-4

**09857**



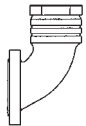
**Alarm system with submersible ball contact switch** with 3 m cable,  
separate, mainsdependent, with potential free contact

**16723**



**Rechargeable battery** for off the line operation of the alarm system

**07562**



**Flanged connecting branch** for UAK 08/2 MS+MES

**26310**

## Technical Data

### Tank

Waterproof PE tank (220 l) with connection branches for inlet 1 x DN 150/100 and 1 x DN 100, connection branch for tank venting facility (DN 70), pressure piping (for 50 mm PVC pipe) and odour-proof screwed cover.

### Installation

Screwed pipe connections with reducing nipple for pressure pipe connection of the pumps (shorten the pipe length as specified). The elastic connection connects the pressure outlet of the pump (PVC-fitting with PVC-tube) and the already prepared pressure tube.

Pull the cable of the pump through the venting pipe up to the T-piece (provided by the customer in acc. with the installation drawings). The opening can be closed with the attached HT plug.

### Scope of supply

Plastic tank with cover, gasket and attached connection branch, prefitted sump pressure pipe and elastic connection, without pump.

